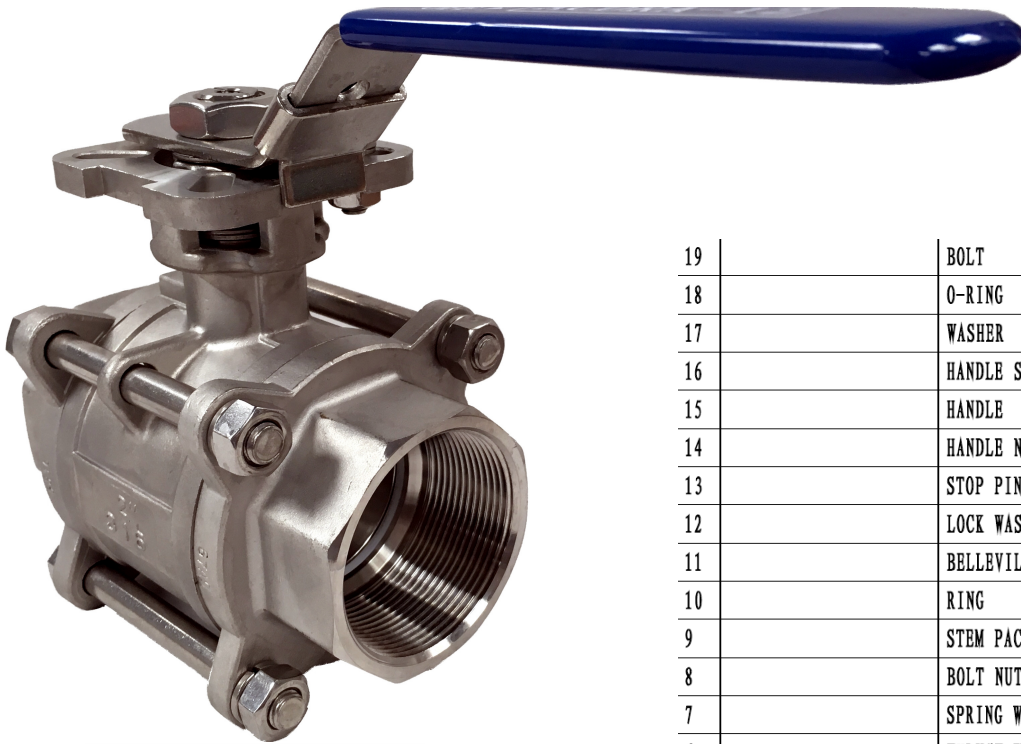


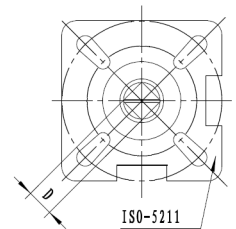
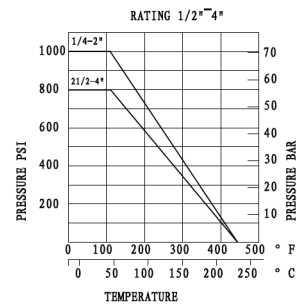
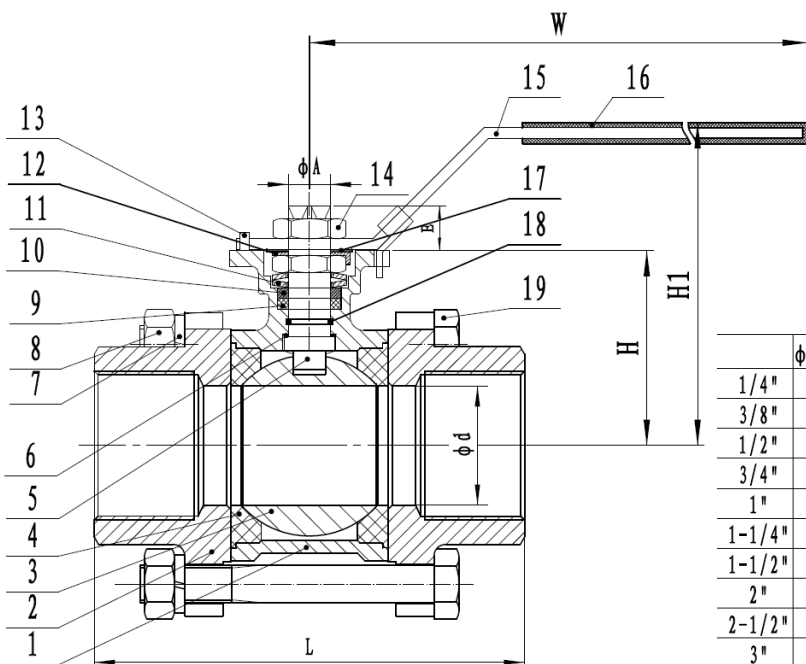
# ACDRA 12

## VÁLVULA DE BOLA 3 PIEZAS INOX 316 ROSCADA GAS PN 63



- VÁLVULAS DE BOLA 3 PIEZAS, PASO TOTAL
- MATERIAL EN10213-4 1.4408
- EXTREMOS ROSCADOS GAS SEGÚN DIN 2999
- ACCIONAMIENTO POR PALANCA
- CON CERTIFICADOS DE CALIDAD
- PLATINA ISO 5211 MONTAJE DIRECTO ACTUADOR
- TOPE BLOQUEO PALANCA

19	BOLT	4 (6)	304
18	O-RING	1	VITON
17	WASHER	1	304
16	HANDLE SLEEVE	1	PLASTIC
15	HANDLE	1	304
14	HANDLE NUT	2	304
13	STOP PIN	1	304
12	LOCK WASHER	1	304
11	BELLEVILLE WASHER	2	301
10	RING	1	304
9	STEM PACKING	1	PTFE
8	BOLT NUT	4 (6)	304
7	SPRING WASHER	4 (6)	304
6	THRUST WASHER	1	PTFE
5	STEM	1	304/316
4	SEAT	2	PTFE
3	BALL	1	CF8M/CF8
2	CAP	2	CF8M/CF8
1	BODY	1	CF8M/CF8



	$\phi d \pm 0.5$	$L \pm 2$	$H \pm 1$	$D_{-0.07}^0$	$E \pm 1$	$A_{-0.3}^0$	ISO5211	W	H1
1/4"	11.6	55	38.5	9	9	12	F04/03	143	70
3/8"	12.5	60	38.5	9	9	12	F04/03	143	70
1/2"	15	75	38.5	9	9	12	F04/03	143	70
3/4"	20	80	47.5	9	9	12	F04/03	143	79
1"	25	90	59	11	11	14	F05/04	163	95
1-1/4"	32	110	63.5	11	11	14	F05/04	163	95
1-1/2"	38	120	79	14	15	18	F07/05	188	116
2"	50	140	86.5	14	15	18	F07/05	188	124
2-1/2"	64	162	109.1	17	17	22	F10/07	350	141
3"	76	184	117	17	17	22	F10/07	350	149
4"	94	228	136	22	22	28	F12/10	350	173